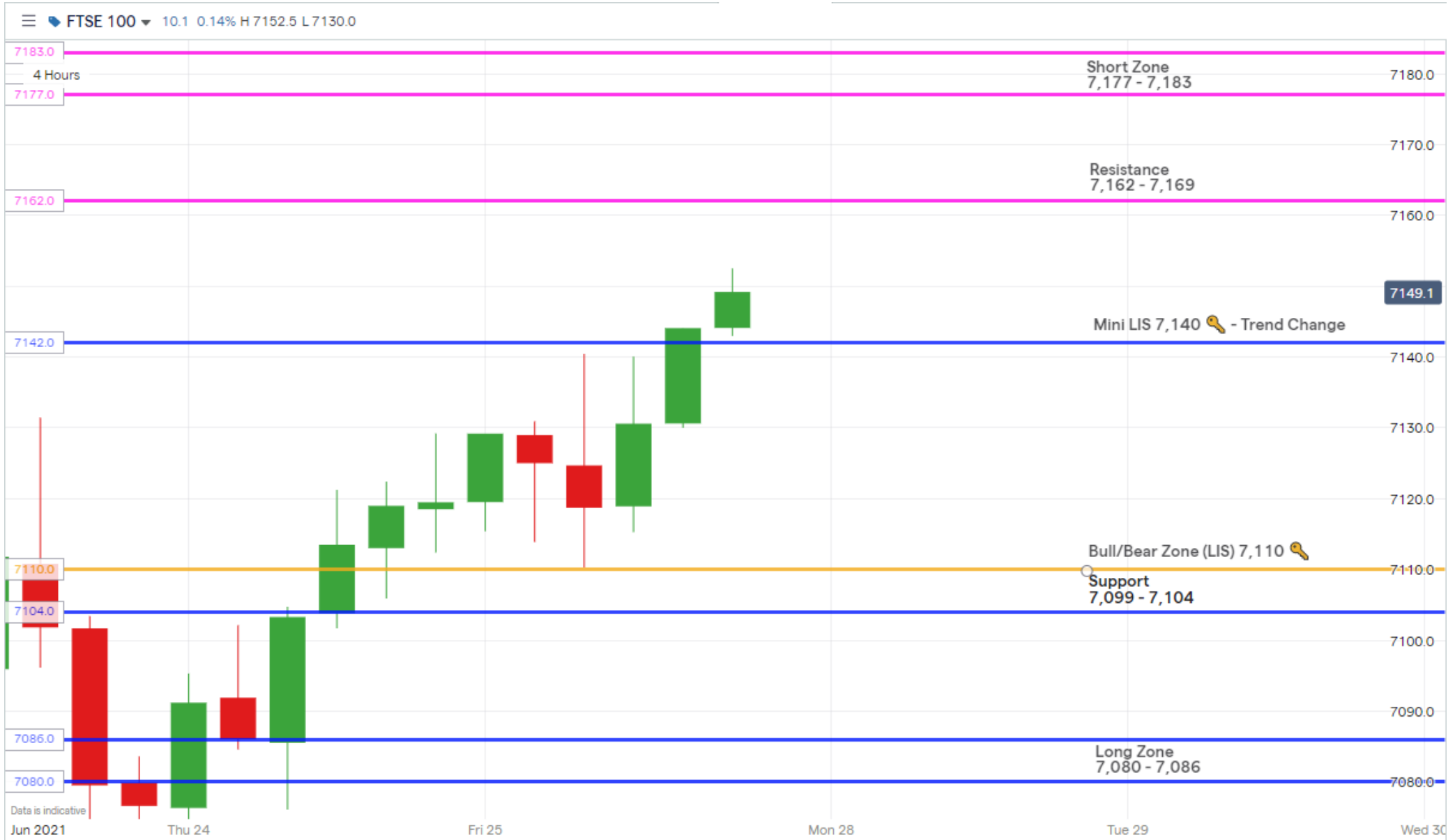




# #FTSE – Main Plan (28/06 – 02/07)





# #FTSE – Daily Plan 28/06



• **Daily Trend:** Bullish

• **Daily LIS:** 7,110

• **Main Trading Zones:**

Long 1: (7,115 – 7,121)

Long 2: (7,080 – 7,086)

Short 1: (7,177 – 7,183)

• **Additional Notes:**

FTSE Sept Futures: -67 Points  
Difference from Cash/DFB Levels

ATH (Cash Levels): 7,218.6

Gap Fill:

